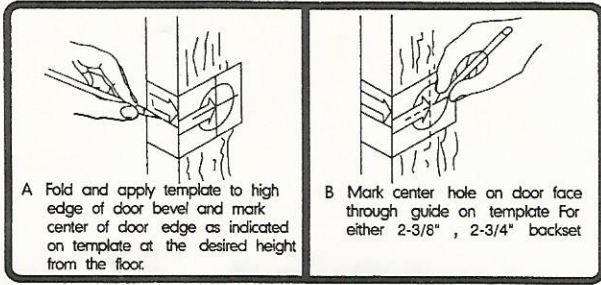
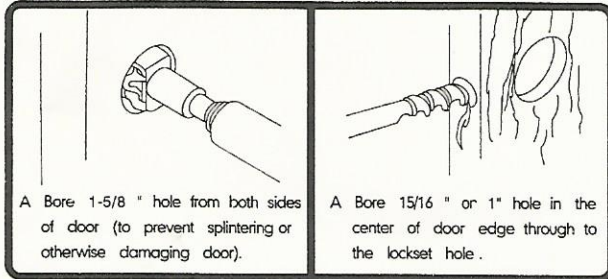


INSTALLATION INSTRUCTIONS FOR D400 SERIES SINGLE AND DOUBLE CYLINDER DEADLOCKS. (FOR USE ON DOOR 1-3/8" TO 2-1/4" THICK)

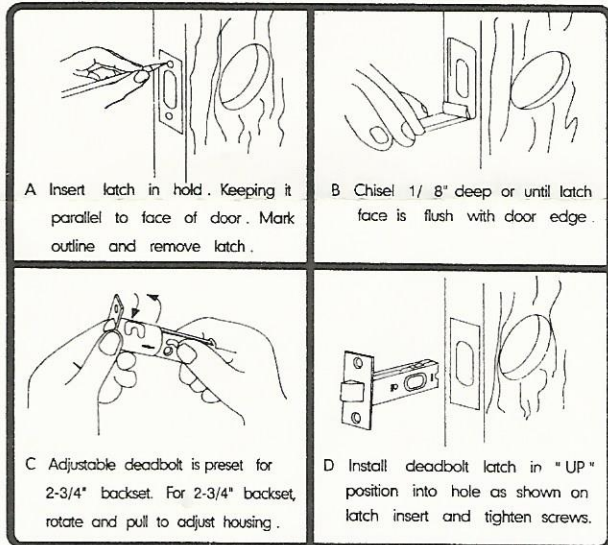
1. MARK DOOR



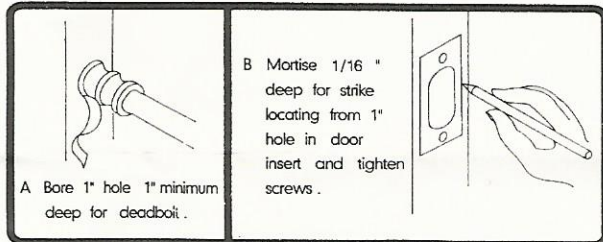
2. DRILL HOLES



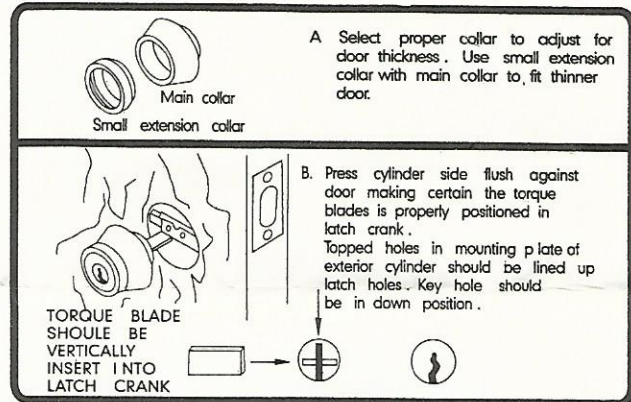
3. INSTALL LATCH



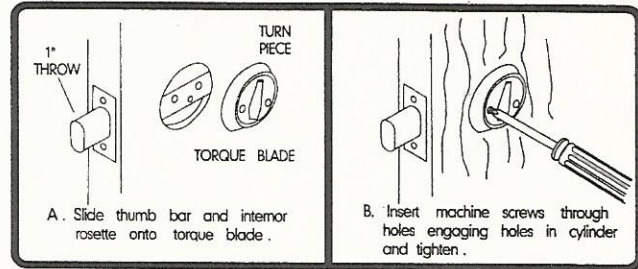
4. INSTALL STRIKE



5. INSTALL EXTERIOR MECHANISM



6. INSTALL INTERIOR MECHANISM



INSTRUCTIONS FOR INSTALLING DOUBLE CYLINDER DEADLOCKS

